

BELONG



JOURNEY



IMPACT



SUPPORT

#IGG2020

The Strategic Plan for IGG 2016-2020



Irish Girl Guides

BELONG

- ▶ *Members develop life skills and interests as a result of their participation in local activities and events*
- ▶ *More girls benefit from a safe girl-only space where they develop confidence at their own pace through non-formal education methods*
- ▶ *Girls and women gain knowledge and a sense of belonging through participation in national and international Guiding activities*

JOURNEY

- *Through the progressive Journey Programme, girls and young women learn skills, attitudes, healthy behaviours and Guiding values*
- *Girls and women are empowered to be active citizens through membership of a global Guiding movement that is environmentally conscious*
- *Girls and women take action as advocates for Guiding and active global citizenship*

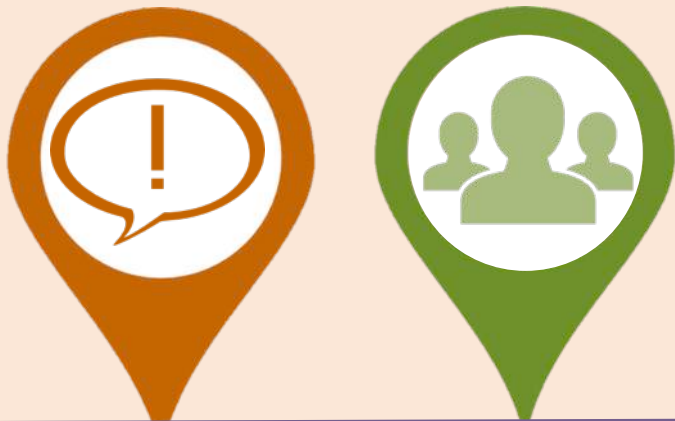


BELONG JOURNEY

#IGG2020 is the Strategic Plan of the Irish Girl Guides for 2016-2020. It consists of 12 National Outcomes which we will work together to achieve over the next five years. The Outcomes are interlinked and together they create the four strands of our work and focus for #IGG2020. It will encompass all meetings, activities and events that IGG members are involved in across every county in Ireland and internationally as global citizens.



Strategic Plan 2016-2020



IMPACT SUPPORT

These activities are educational in nature and are based on girls and women striving to do their best. When we set ourselves a challenge and work together to learn how to do it, we can achieve great things. Our work towards #IGG2020 will be monitored by our Leaders, Regional Teams, National Committees and Staff. Evaluations will take place each year via the Annual Targets progress report. Every member of IGG can contribute to #IGG2020.



IMPACT

- ★ IGG members are trained in leadership skills from an early age and every member has the opportunity to develop and enhance these skills throughout their involvement in the organisation
- ★ IGG has a strong visibility as an inclusive organisation across Ireland and members are encouraged to speak out on a variety of relevant issues
- ★ IGG is recognised as complying with best practice in the community and voluntary sector and as a registered charity

SUPPORT

- Volunteers are upskilled to mentor, support and empower the girls throughout their journey
- An ethos of teamwork is evident in the nurturing environment where the focus is on learning by doing
- By means of intergenerational learning IGG members gain skills and qualifications transferable to other aspects of their lives

Who helped develop #IGG2020?

Consultations were held with various members, stakeholders and external partners. The Review of IGG's 2012-2015 Strategic Plan also contributed to this plan. Irish Girl Guides thanks everyone who gave willingly of their time to input into the development of this plan and we look forward to working together to achieve #IGG2020.



Note: Pyramid Ranking was a group activity where the members were asked to prioritise the items they wanted to keep in Guiding and to order them in a pyramid shape. SWOT analysis is a tool used to consider an organisation under the following headings: Strengths, Weaknesses, Opportunities and Threats.

©2016 Irish Girl Guides, National Office, 27 Pembroke Park, Dublin 4. Charity No. 20006327
Tel: 01-6683898/9035 Email: info@irishgirlguides.ie Web: www.irishgirlguides.ie

